



SCRUTINEERING - 2010

Scrutineering of local area billy carts will be from 1.00pm to 3.00pm sharp on Saturday 13 February at the Blayne Shire Council Depot in Lawson Street Blayne. Billy carts that pass scrutineering will be allocated a number and locked up for the night at the Depot. Billy carts will be taken to the appropriate starting line on Sunday morning. Billy carts that do not pass scrutineering may be taken home and modified to comply and will be scrutineered on Sunday morning. If a billy cart does not then pass scrutineering it will not be permitted entry to the race.

SCRUTINEERS WILL ONLY PASS BILLY CARTS AND DRIVERS THAT MEET THE SPECIFICATIONS

DRIVER SPECIFICATIONS

The Driver must at all times wear the following:

- Helmet (The helmet must comply with current Australian Standards for a pushbike or motorbike helmet).
- Gloves and strong, sturdy covered shoes that support the ankles.
- No loose clothing.
- Elbow and knee pads.

Each driver **must** be able to control the steering and brakes.

BILLYCART SPECIFICATIONS

For race categories: Under 8's - 8 to 11 - 12 to 15

- Maximum dimensions 1.2metres wide x 2 metres long x 1.2 metres high (not including driver height)
- Must have 4 pneumatic or solid tyre wheels no larger than 300mm
- Must have 2 axles, minimum wheel spacing 400mm

For race categories: Open (Over 15) - Mums 'n' Dads and Ma's 'n Pa's - Powder Puff Sprint - Corporate

- Must have 4 pneumatic or solid tyre wheels

For all race categories:

- The billy cart must have an adequate steering mechanism
- The billy cart must have a working brake - not your foot on the road or wheel!
- There must be sturdy construction of all billy cart components, and fixed seating
- Maximum weight of cart must not exceed 70kg
- All components are to be adequately secured to the cart such that in the event of a piece of cart 'breaking off' it does not interfere with spectators or other competitors
- NO** dangerous protrusions
- NO** motors, sails, pedals, paddles, or any other propulsion device
- SPOKED WHEELS** – see below

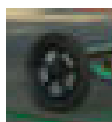
ALL BILLYCARTS MUST PASS A SAFETY CHECK

SPOKED WHEELS

SPOKED WHEELS WILL BE PERMITTED PROVIDED THE SPOKES ARE COVERED ON BOTH SIDES WITH A STRONG STURDY MATERIAL THAT IS SECURELY ATTACHED.

Definition of a spoke: A bar or rod that extends from the hub of a wheel to support or brace the rim)

Not Permitted



SCRUTINEERING

WHEN: Saturday 13 February from 1.00pm to 3.00pm sharp.

WHERE: Blayne Shire Council Works Depot
Lawson Street Blayne

Scrutineering for billy carts that are not from the local area, and are unable to attend on Saturday 13 February, will be available at 7.00am on the morning of race day.